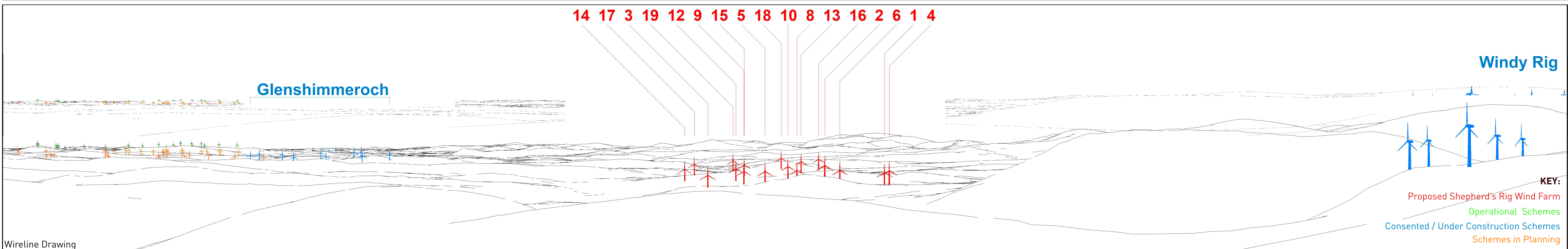


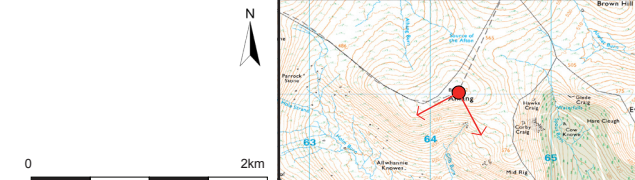


Baseline Photograph



Wireline Drawing

AEI Figure 8.52 (sheet A)
Viewpoint 16: Alhang
 SHEPHERD'S RIG WIND FARM

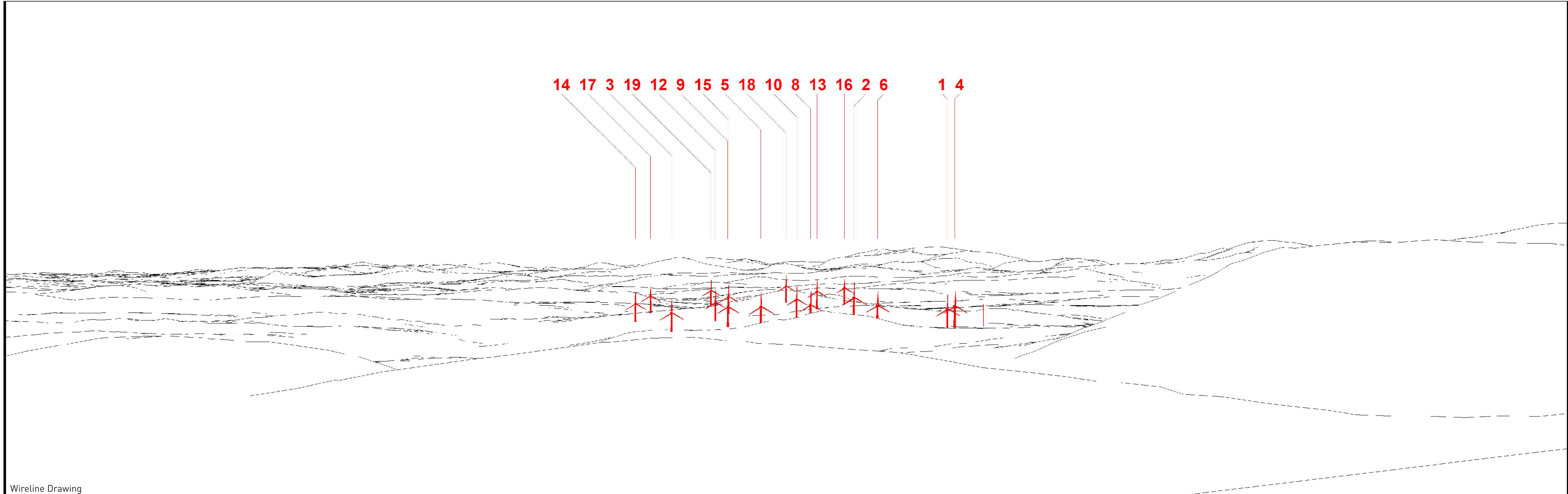


Viewpoint Information
 OS Reference: E 264228 N 601023
 Ground level: 636m (AOD)

Distance to nearest turbine: 5847m (T1)
Bearing to centre of photograph: 197.2°

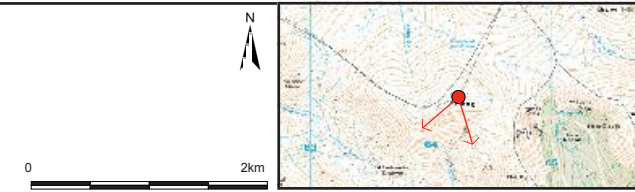
Angle of view: 90° (cylindrical)
Principal distance: 500mm

Camera: Canon EOS 5D Mark III
Lens: 50mm Fixed Focal Lens
Height: 1.5m
Date & Time: 05/06/2018 14:01



Wireline Drawing

AEI Figure 8.52 (sheet B)
Viewpoint 16: Alhang
 SHEPHERD'S RIG WIND FARM



Viewpoint Information
 OS Reference: E 264228 N 601023
 Ground level: 636m (AOD)

Distance to nearest turbine: 5847m (T1)
Bearing to centre of photograph: 197°

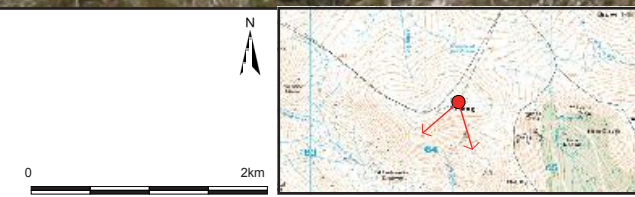
Angle of view: 53.5° (planar)
Principal distance: 812.5mm
Paper size: 841 x 297 mm (half A1)
Correct printed image size: 820 x 260mm

Camera: Canon EOS 5D Mark III
Lens: 50mm Fixed Focal Lens
Height: 1.5m
Date & Time: 05/06/2018 14:01



Photomontage (showing baseline with proposed scheme only)

AEI Figure 8.52 (sheet C)
Viewpoint 16: Alhang
 SHEPHERD'S RIG WIND FARM



Viewpoint Information
 OS Reference: E 264228 N 601023
 Ground level: 636m (AOD)

Distance to nearest turbine: 5847m (T1)
Bearing to centre of photograph: 197°

Angle of view: 53.5° (planar)
Principal distance: 812.5mm
Paper size: 841 x 297 mm (half A1)
Correct printed image size: 820 x 260mm

Camera: Canon EOS 5D Mark III
Lens: 50mm Fixed Focal Lens
Height: 1.5m
Date & Time: 05/06/2018 14:01